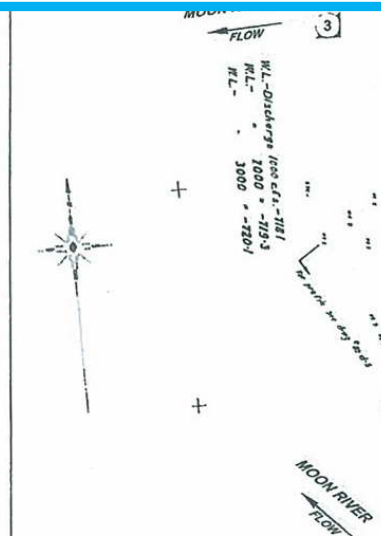


4) Also Thompson found that the Bala Portage was **between** what is now the Bala south channel and the north falls. Also, old photographs show canoes at and on the shore closer to the north falls, so the original Bala Portage was likely closer to here.

5) So the original Bala Portage was more likely something like this.

2) As the first Bala dams were built in 1873, before this, the entire Bala north channel would have been fast-flowing rapids, and not used for canoeing.

3) So the original Bala Portage would have been at what is now called Diver's Point, Thompson's map confirms this.



- CROWN LAND BOUNDARY
 - SCHEMATIC PORTAGE ROUTE
- SCHEMATIC PORTAGE ROUTES:
- ① THOMPSON PORTAGE ROUTE (80m)
 - ② WAREHOUSE PORTAGE ROUTE (90m)
 - ③ HILEY SURVEY PORTAGE ROUTE (80m)

REFERENCE
 DRAWING BASED ON 'BALA DEVELOPMENT - POWER SITE', HYDRO-ELECTRIC POWER COMMISSION OF ONTARIO, CIRCA 1933; AND IMAGES No. 1 - 4 PROVIDED BY SWIFT RIVER ENERGY CORP.

NOTES
 THIS DRAWING IS SCHEMATIC ONLY AND IS TO BE READ IN CONJUNCTION WITH ACCOMPANYING TEXT.
 THE 1933 HYDRO PLAN WAS ADJUSTED TO PROVIDE A BEST-FIT FOR THE 2008 AIR PHOTO OF BURGESS ISLAND. AS A RESULT OF THE QUALITY OF THE ORIGINAL PHOTOCOPY, THE NORTH/SOUTH DISTORTION OF FEATURES BECOMES PRONOUNCED WITHIN THE NORTH CHANNEL AND BECOMES UNRELIABLE BY THE NORTH BANK OF THE CHANNEL. THERE IS NEGLIGIBLE EAST-WEST DISTORTION.
 ALL LOCATIONS ARE APPROXIMATE.

1) Study authors erroneously concluded this was the original Bala Portage route, for example, as used in 1837.

PROJECT: HISTORICAL ASSESSMENT OF PORTAGE ROUTES TOWNSHIP OF MUSKOKA LAKE BALA FALLS, ONTARIO

TITLE: POSSIBLE PORTAGE ROUTES ACROSS BURGESS ISLAND

PROJECT No. 11-1136-0068 FILE No. 1111360068-R01002

SCALE AS SHOWN REV.

CADD DCH May 21/13

CHECK

MAP B

Golder Associates
 LONDON, ONTARIO