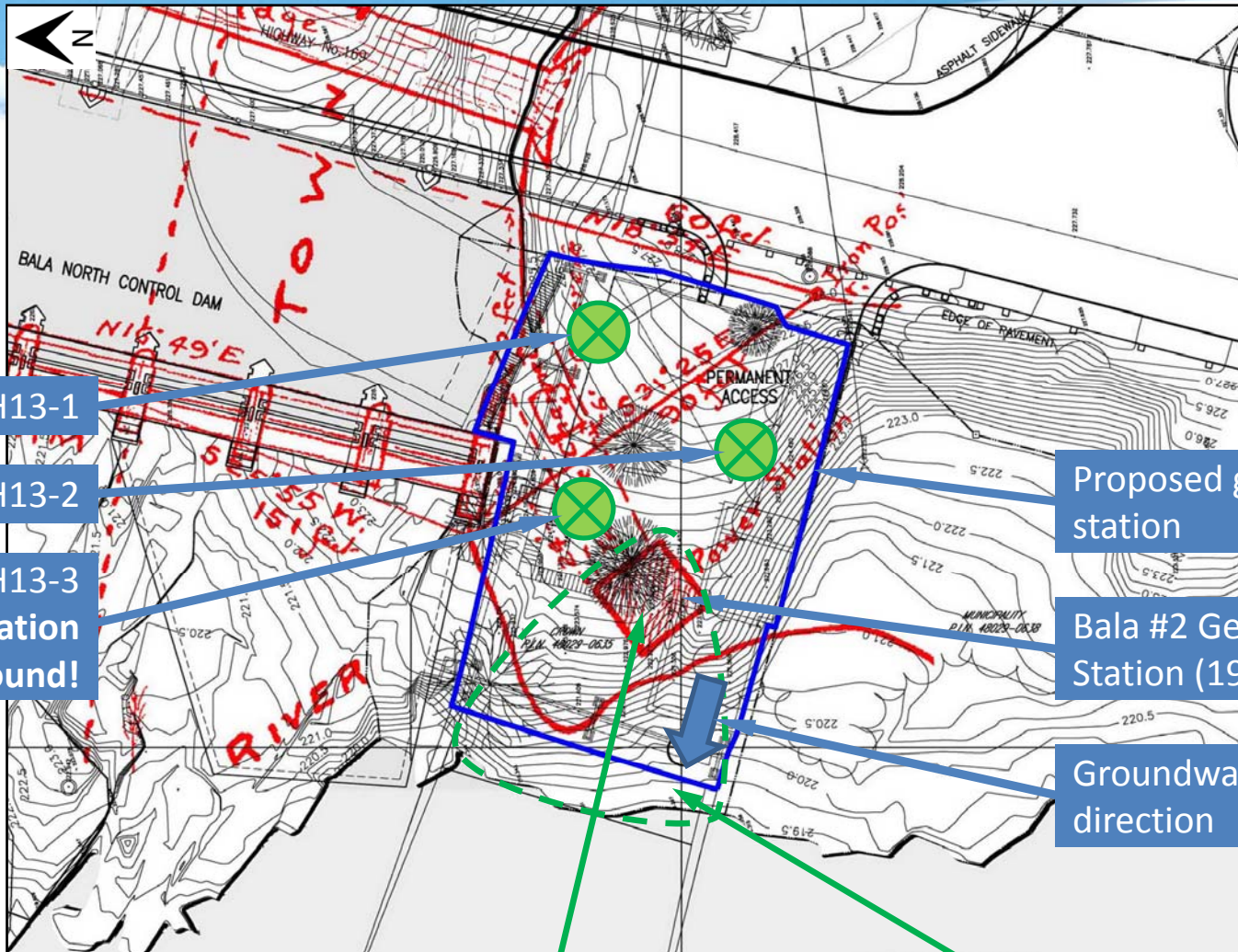


# Exploratory borehole locations



Borehole CH13-1

Borehole CH13-2

Borehole CH13-3  
contamination  
found!

Proposed generating  
station

Bala #2 Generating  
Station (1924 to 1972)

Groundwater flow  
direction

Need to test **where station was**, and closer to water  
Hazardous wastes or machinery may have been left and buried in 1972