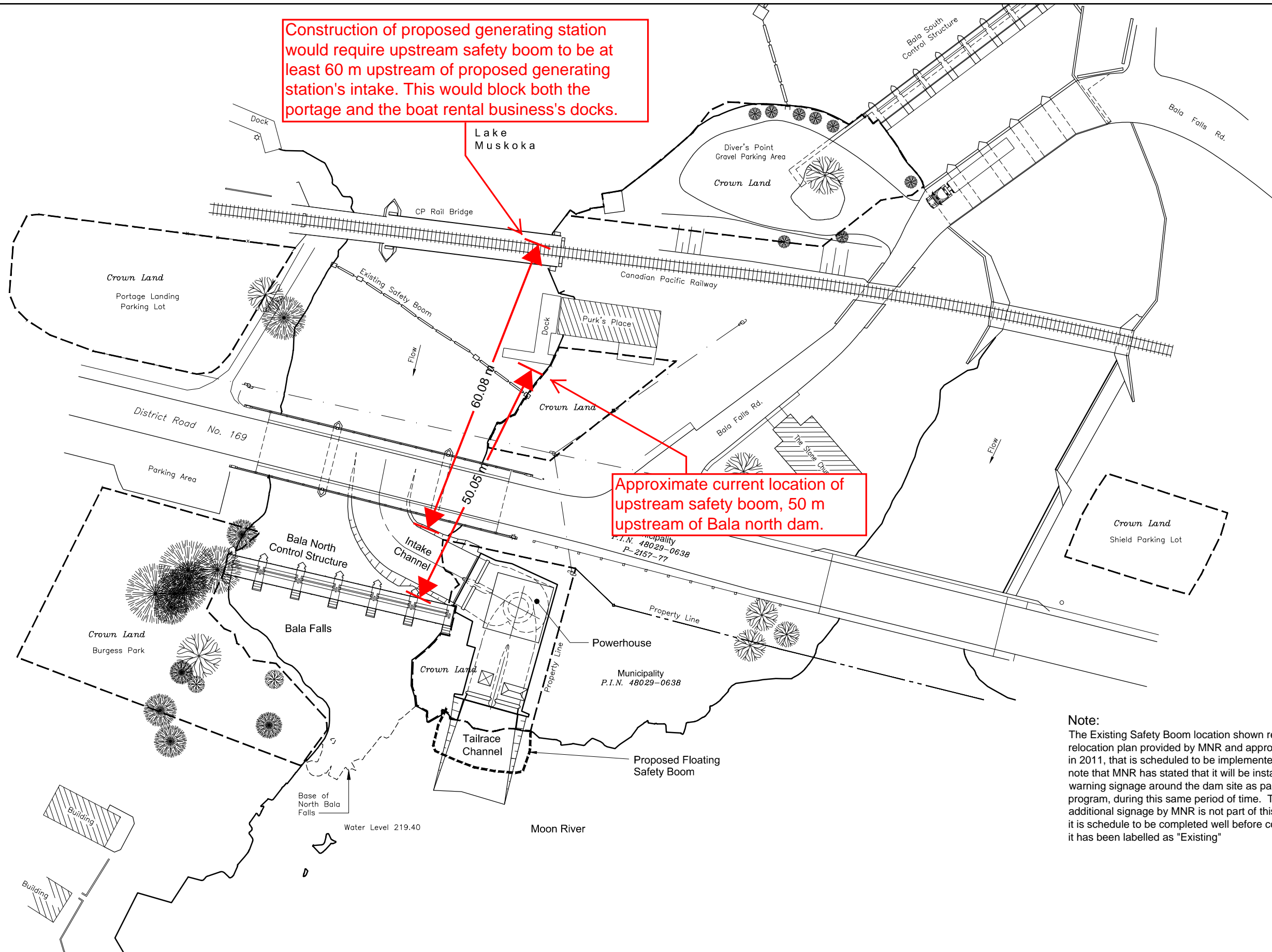


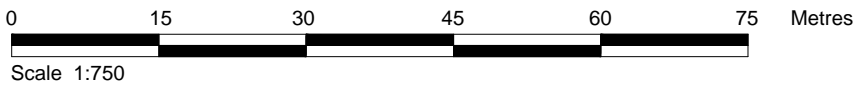


Construction of proposed generating station would require upstream safety boom to be at least 60 m upstream of proposed generating station's intake. This would block both the portage and the boat rental business's docks.

Approximate current location of upstream safety boom, 50 m upstream of Bala north dam.



Note:
The Existing Safety Boom location shown represents a proposed relocation plan provided by MNR and approved by Transport Canada in 2011, that is scheduled to be implemented by MNR in 2012. Also note that MNR has stated that it will be installing new safety / warning signage around the dam site as part of its own dam safety program, during this same period of time. This boom relocation and additional signage by MNR is not part of this project, however, since it is scheduled to be completed well before construction of this project, it has been labelled as "Existing"



May 28, 2012, 9:26am
 Login name: park110733
 Drawing Name: P:\SWFT\327078\CAD\C\Figures\327078-Fig. 2.1 General Arrangement.dwg

Figure 2.1

Swift River Energy Ltd.
 North Bala Small Hydro Project
 General Arrangement - Alternative 1A

