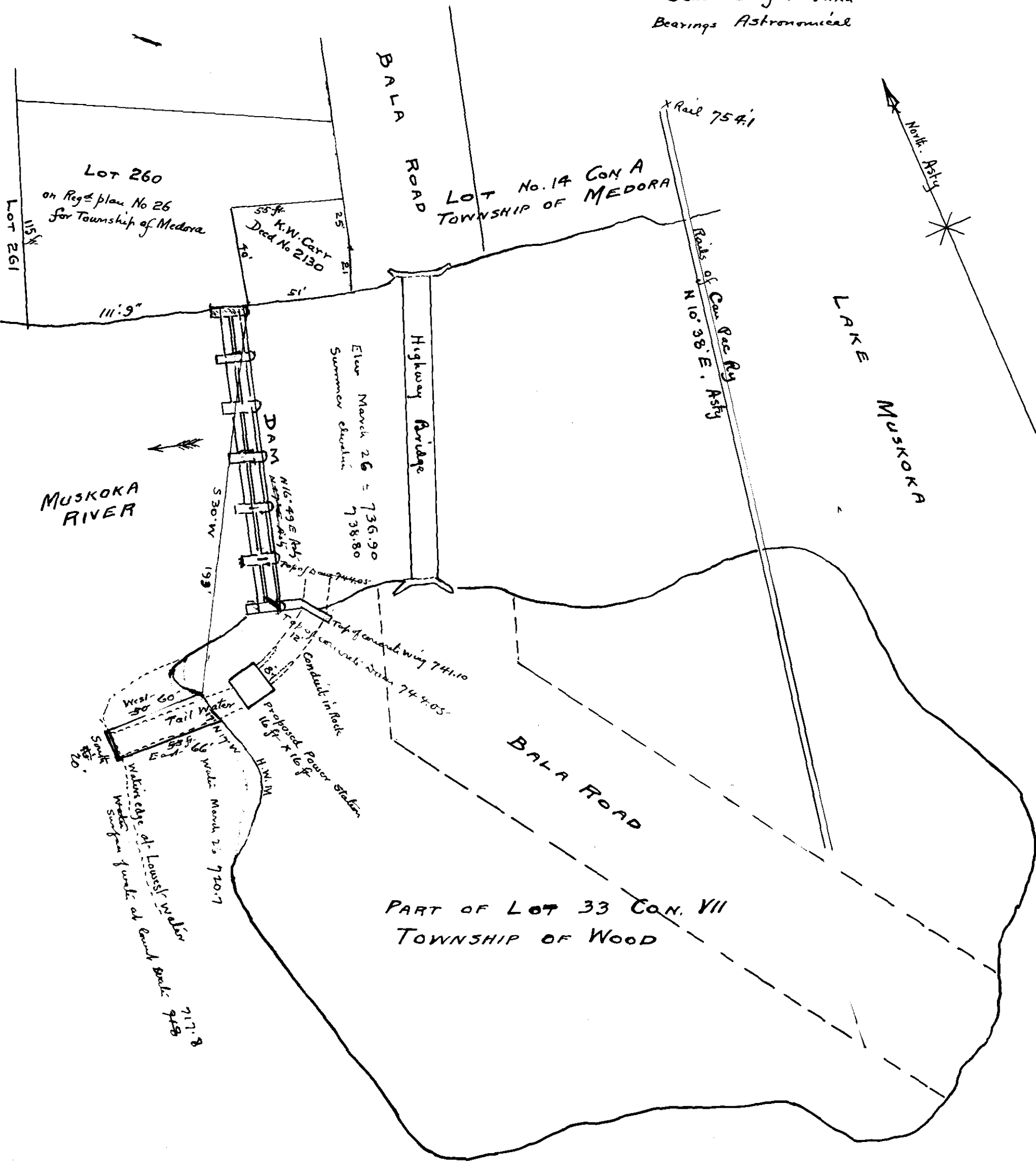


PLAN OF PART OF THE
TOWN OF BALA
DISTRICT OF MUSKOKA
SHEWING PROPOSED POWER DEVELOPMENT

Scale 50 feet = 1 inch
Bearings Astronomical



W. Gallbraith
O. L. Surveyor
Bracebridge March 29, 1924

Zero of gauge at C.P.R. Dock
is about 738.8
Fall from gauge to Dam about 0.25
Water is kept a few inches above zero of gauge