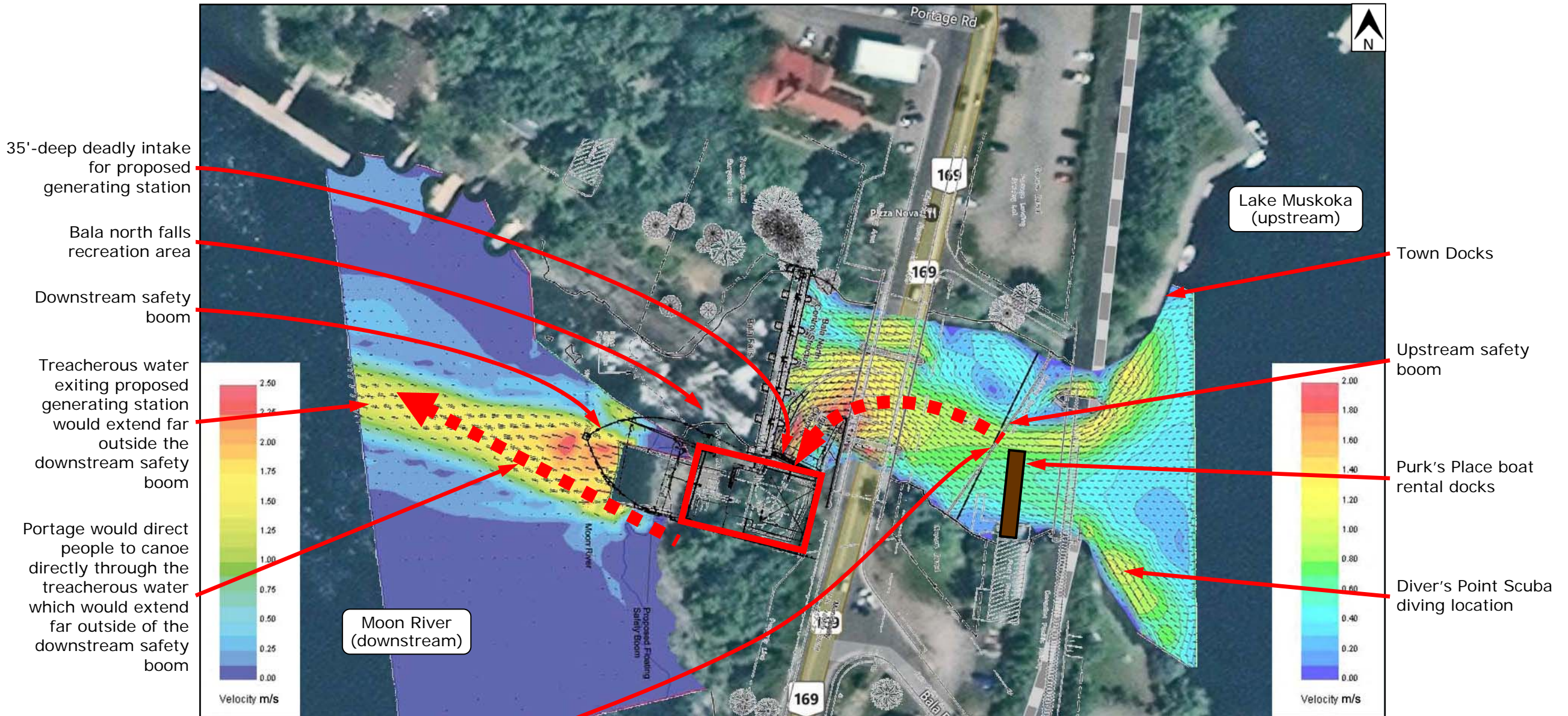


Murdered in 45 seconds



Getting into or out of a canoe is probably the most common place to fall or tip out of it:

- The boat rental docks are only 55 m upstream of the 35'-deep deadly intake to the proposed hydro-electric generating station at the Bala falls.
- The water would flow at 1.2 m/s past the docks, to the proposed station's deadly intake.
- So in only 45 seconds, anyone falling in the water – wearing a life jacket or not, would be carried to the deadly intake, pulled under water, and held there by the tons of water per second flowing down and into the deadly intake. Just 45 seconds from falling in the water to being drowned.