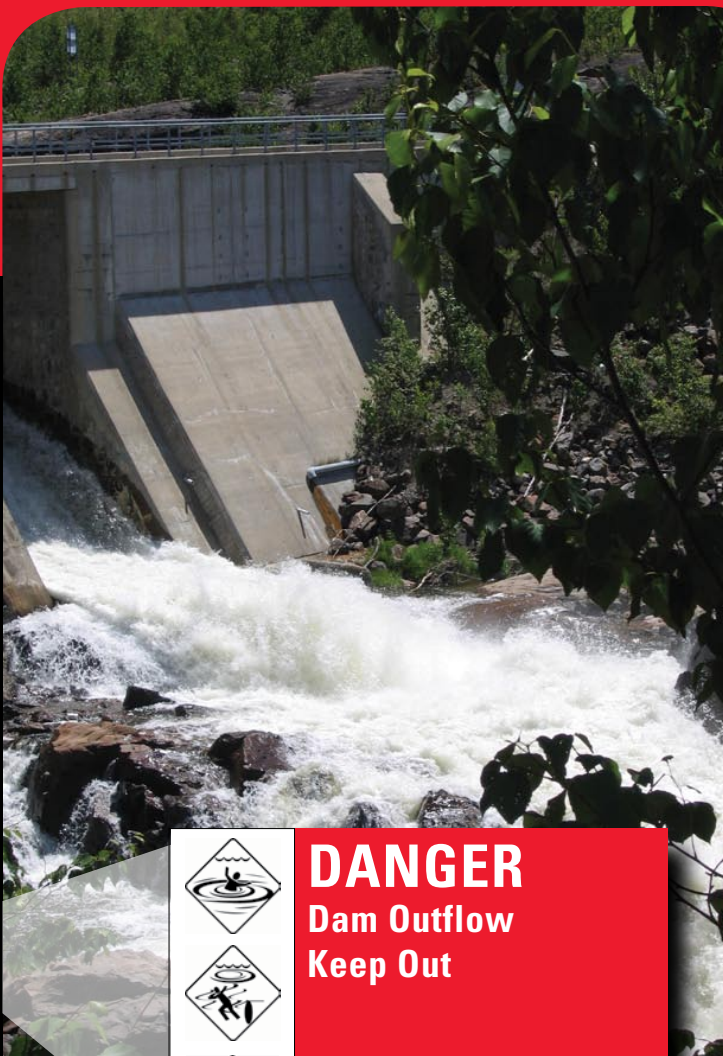


# Stay Clear, Stay Safe

around dams, hydroelectric  
stations and surrounding waterways



O n t a r i o P o w e r G e n e r a t i o n



**DANGER**  
Dam Outflow  
Keep Out

ONTARIO**POWER**  
GENERATION

ONTARIO**POWER**  
GENERATION

# **TEACH CHILDREN TO STAY CLEAR AND STAY SAFE**

## **SET AN EXAMPLE FOR CHILDREN, WHO MAY NOT BE AWARE OF THE DANGERS, EVEN IF THEY CAN READ.**

Be sure and tell children exactly where they can and cannot go and make sure you are nearby and can see them at all times. For their safety teach them what the signs and other barriers mean.

### **As a rule, remember to:**

- Stay out of dry or calm riverbeds below dams. They can quickly change into rapidly flowing waterways with dangerous currents.
- Stay a safe distance outside of warning signs, buoys, booms and barriers and be alert for changes in water levels.
- Stay away from the edge of a waterway where footing may be slippery.
- Don't wade into moving water.
- When swimming, fishing, boating or paddling in a river, be aware of the water level and check upstream frequently for any sign of increasing currents or rising water. If the water level is rising or the flow is speeding up, get out of the water or move your boat downstream. Obey all signs and barriers.



**The area between booms and dams is very dangerous. Stay Clear!**



**Remotely-operated dam gates can quickly turn calm waters or dry riverbeds into dangerous flows.**

## **STAY CLEAR, STAY SAFE AROUND DAMS, HYDROELECTRIC STATIONS AND SURROUNDING WATERWAYS**

**G**etting too close to dams and hydroelectric stations is always dangerous. A spot that seems calm and safe one moment can turn into a dangerous surge of rising and fast-flowing water – quickly and often without any warning.

### **Our operators can't see you**

Most facilities are remotely-controlled by operators many kilometers away. They open or close dams, to manage river flows, and start or stop generators throughout the day and night as demand for electricity rises and falls.

This may result in frequent, rapid and dangerous changes in water levels and flows, changes that can harm those who venture too close.

Be especially careful when near waters above and below dams and hydroelectric stations. At a generating station water from above the dam runs through the station and then surges out to join the main stream of the river.

In areas above and below dams, fast-moving water creates dangerous turbulence and strong undercurrents which are not always apparent from the calm looking surface waters.

## **BE ALERT**

Even if you can't see a generating station or dam, waterways upstream and downstream can still be affected by their operations. It's important to be aware of the potential dangers caused by changing flows, and stay clear of waters near stations and dams.

## **WHAT HAPPENS WHEN YOU FAIL TO STAY CLEAR, STAY SAFE?**



**These anglers are in a very dangerous spot and should not be there. Areas inside warning signs, buoys and booms are extremely dangerous, stay clear of them.**



**The same spot just minutes later. Remotely operated gates at the dam release large volumes of water that could leave you stranded, swamp your boat or put you in the grip of an undertow.**

# DAMS AND HYDROELECTRIC STATIONS ARE NOT RECREATION AREAS

Be wise not to treat hydroelectric facilities as fishing holes, boating areas or swimming areas.

These areas are not safe for any recreational activities, including camping, picnicking or even winter activities such as snowmobiling or cross-country skiing.

Put safety first. When travelling on unfamiliar paths or waterways plan your trip ahead.

## For your own safety near a dam or hydroelectric station, make sure that you:

- Obey ALL warning signs, fences, buoys, booms and barriers. They are put there to protect you. The areas inside are dangerous, so stay clear.



- Some signs have pictures that show the consequences of not staying clear.
- Stay well back from the edge of waters above and below dams and hydroelectric stations.
- Never stand below a dam, or anchor or tie your boat there. Rapidly changing water levels and flows can swamp your boat or pull you into an undertow.
- Stay off dams or hydroelectric station structures, unless OPG has clearly indicated where it is safe to walk or drive.

## **DON'T FIND YOURSELF ON THIN ICE**

### **WINTER BRINGS MORE DANGERS**

Ice forming near a dam or hydroelectric station can be thinner and less consistent than ice in other locations because of changing water flows beneath it.

- Avoid snowmobiling, cross-country skiing, skating or ice fishing on rivers or lakes near dams and generating stations.
- Don't risk walking onto a river or lake around dams and generating stations where the ice may be thin due to the current. Changing water levels can crack the ice, leaving it weak and unstable.

**YOUR SAFETY IS IMPORTANT TO US.  
PLEASE OBEY ALL SIGNS, BUOYS BOOMS,  
AND BARRIERS.**

### **STAY CLEAR, STAY SAFE**

We take pride in operating our facilities safely, in a manner that respects the environment and the rights of other users of the waterways.

Please respect the hazards near our dams and stations, and obey all warning signs, booms, buoys, and barriers. They are there for your protection.

**For more information or to obtain  
a FREE DVD and FREE interactive,  
educational computer game for  
children, simply visit [www.opg.com](http://www.opg.com)**

