

Bala Falls Power Station



AN ALTERNATIVE FOR CONSIDERATION

Objective



**Work collaboratively with Council,
in a positive and unifying fashion,
to secure the optimal solution
for the Bala Falls Power Station**

The Site



Current Scenario



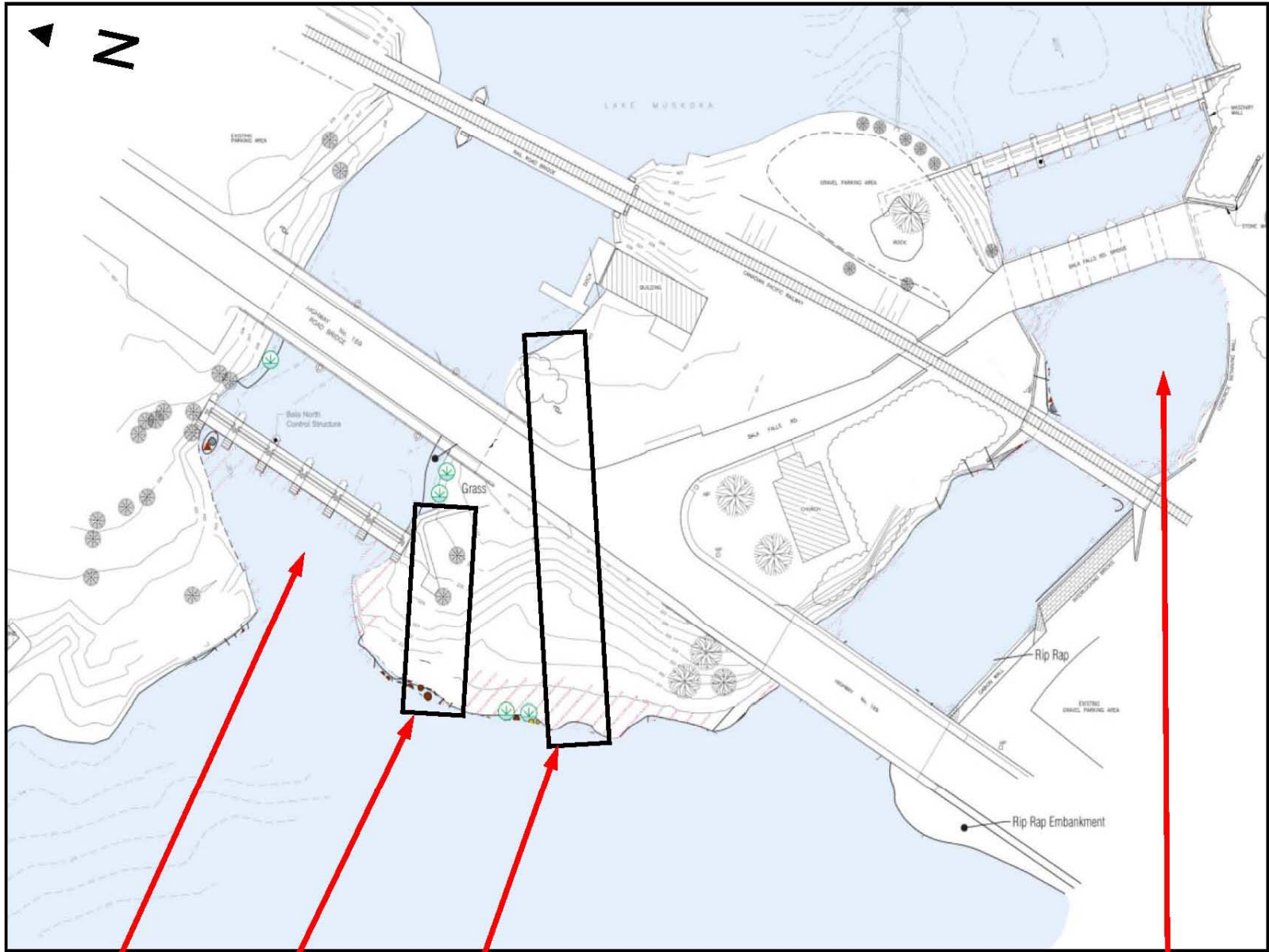
- **Swift River Energy Limited (SREL) has presented two options:**



Option 1: Initial concept, immediately adjacent to the North Falls



Option 2: Revised concept, incorporating both MNR and District land



North Falls
and Channel

Option 1

Option 2

South Falls
and Channel

Bala Falls Power Station Proposed Locations Options 1 and 2

Principal Concerns



- **Dangerously fast intake water adjacent to town docks**
 - And bright orange safety booms
- **Highly unattractive safety and structural intrusions**
 - Which are not reflected in SREL's artist's renderings
- **Safety fencing along the North Channel and the lookout platform**
- **50'-wide concrete intake between railway bridge and highway**
- **33'-wide, 18'-high steel gate and 50'-wide, 20'-high retaining wall facing the Moon River**
 - And destruction of natural rock formations and shoreline vegetative buffer
- **Devastating to town's beauty and tourism**

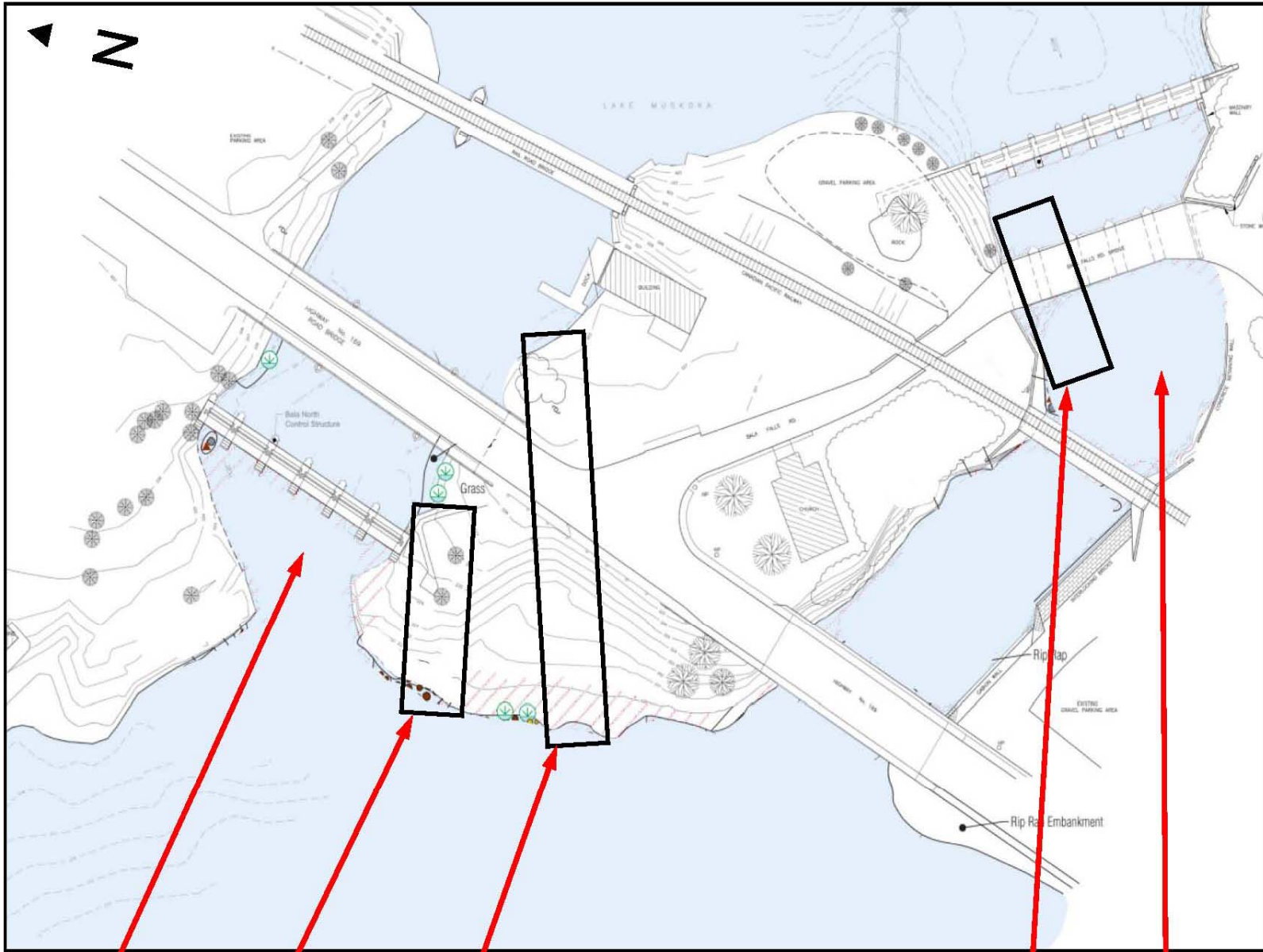
Another Option



- These concerns would all be eliminated by:

Option 3

- Utilize the north side of the South Channel
 - Keeps the dangerous fast water where it is now
 - No fences required along the North Channel
 - Not visible from the Moon River or from Bala Bay
 - Maintains the required spillway for the spring freshet



North Falls
and Channel

Option 1

Option 2

Option 3
In the South Channel

South Falls
and Channel

Possible Bala Falls Power Station Locations

This is the Bala Falls Road bridge over the South Channel, looking north to Bala Bay

Benefit: The water would continue to flow through the South Channel, so there would be no new danger of fast water near the town docks

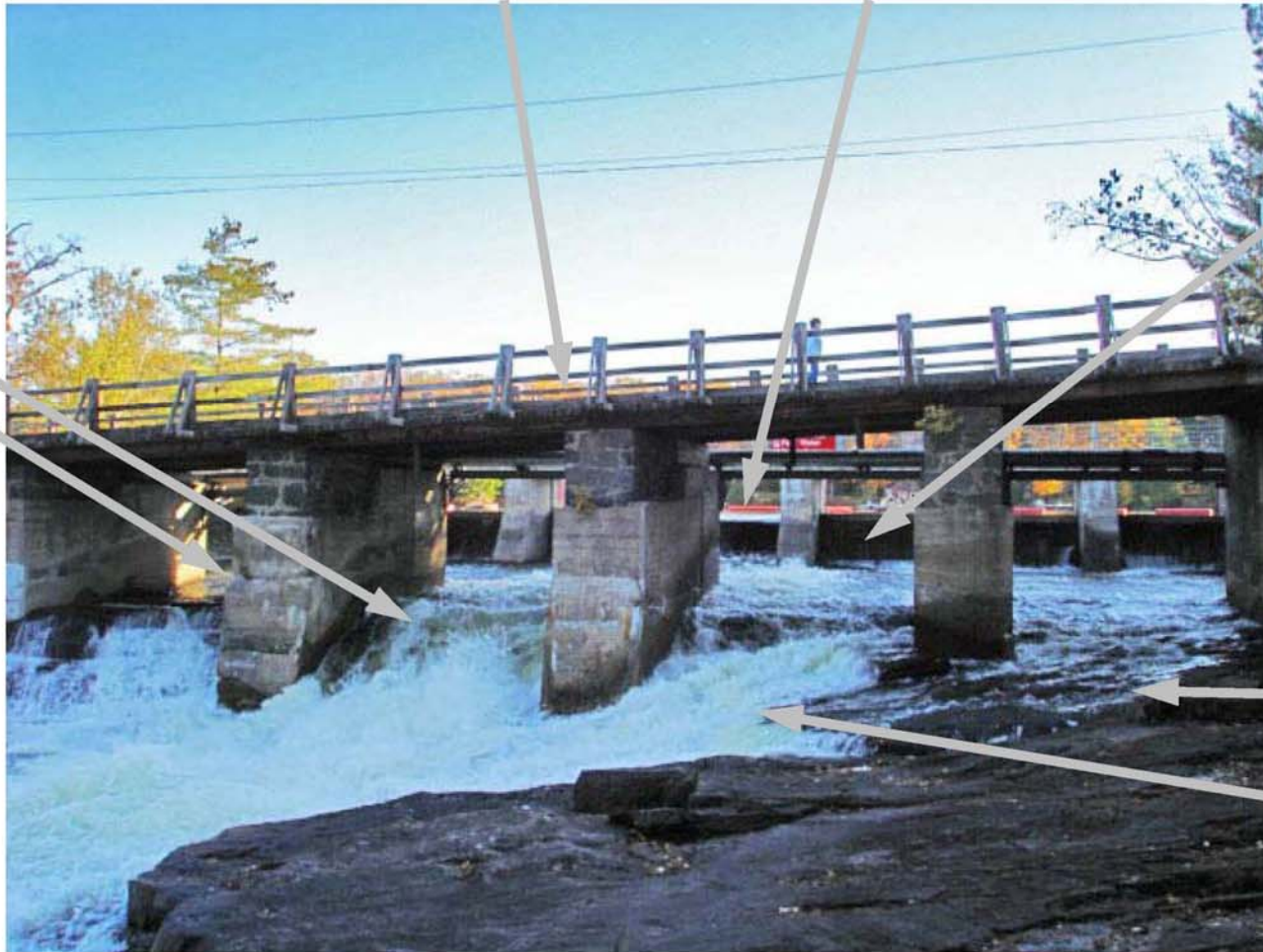
Challenge: To maximize the power generated, the "draft tube" (carrying the water exiting the turbine) would need to extend down to the Moon River

The power station would likely be only at the left side of this channel

Challenge: Riparian (shoreline) rights may need to be obtained from adjacent land-owners

Challenge: Minimize the obstruction to the South Channel, to accommodate the spring run-off (freshet)

Opportunity: Aging bridge would be rehabilitated as part of project – bridge span would be reduced (due to power house) so bridge supports could be eliminated



Not so scenic: Much of the South Channel (behind where this picture was taken from) is ugly concrete, the rusty railway bridge, and the underside of the highway bridge

Option 3
Power Station in the South Channel (and not visible from the Moon River or Bala Bay)

Principal Advantages



- **The south channel is a safer location**
 - No dangerous water intake near the town docks
 - No dangerous 18' platform at the Moon River
- **Power Station would be hidden in a “less scenic” location**
 - Invisible to tourists and residents of the Moon River and Bala Bay
 - No new safety boom adjacent to the town docks
 - No safety fence around the North Channel or lookout
- **No need for the highway to be shutdown or constricted during construction**
- **Saves the taxpayer the cost of reconstructing the Bala Falls Road bridge over the South Channel**

What is the Ask of Council?



- **That an assessment of the South Channel Option 3 be conducted to determine if this is a viable alternative that can be put forward for the benefit of the community**
 - Including a thorough examination of the condition and life expectancy of the Bala Falls Road bridge
- **For Council's support as we discuss policy issues and alternative solutions with our provincially-elected representatives**

Conclusion



- **We are confident that Option 3 is a unifying solution that balances the needs of the community with Ontario's need for clean energy**
- **Thank you for your time and attention**
- **Please contact us anytime**
 - Alice Murphy (Save The Bala Falls): abmurphy@rogers.com
 - Jeff Mole (Bala Falls Community Association): bala.falls@live.ca