

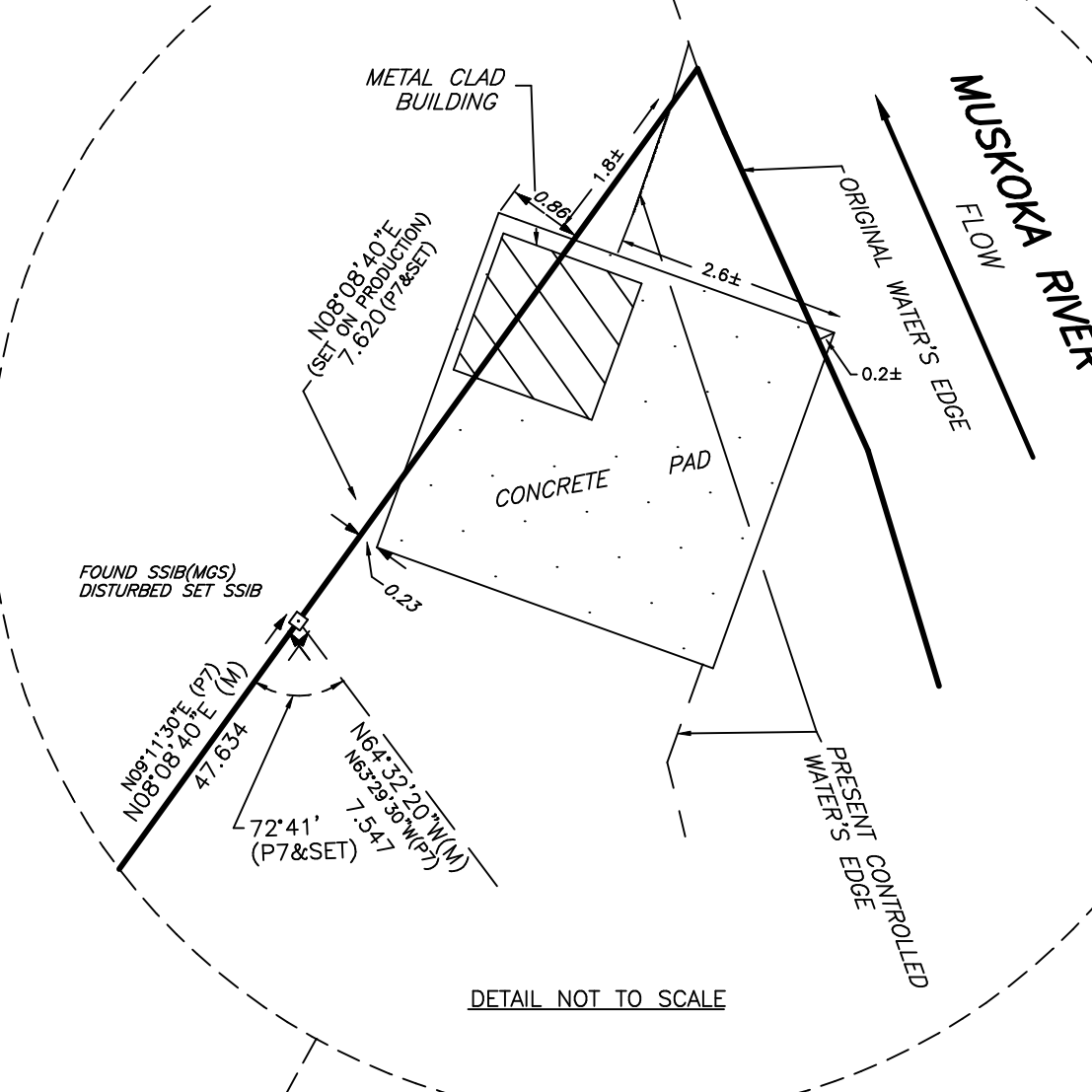
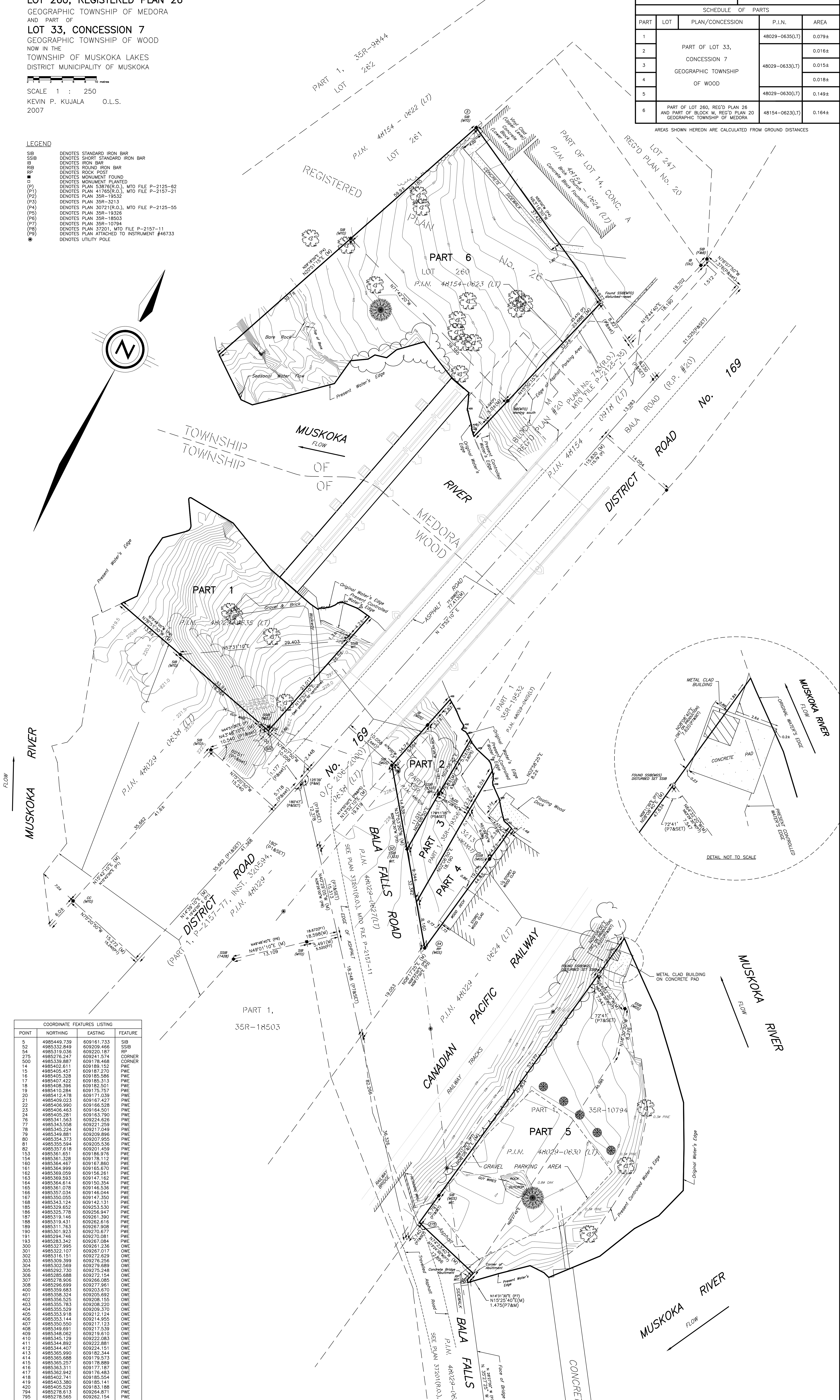
PLAN OF SURVEY
 OF PART OF
 BLOCK M, REGISTERED PLAN 20
 AND PART OF
 LOT 260, REGISTERED PLAN 26
 GEOGRAPHIC TOWNSHIP OF MEDORA
 AND PART OF
 LOT 33, CONCESSION 7
 GEOGRAPHIC TOWNSHIP OF WOOD
 NOW IN THE
 TOWNSHIP OF MUSKOKA LAKES
 DISTRICT MUNICIPALITY OF MUSKOKA

SCALE 1 : 250
 KEVIN P. KUJALA O.L.S.
 2007

LEGEND
 DENOTES STANDARD IRON BAR
 SIB DENOTES SHORT STANDARD IRON BAR
 IRB DENOTES IRON BAR
 RIB DENOTES ROUND IRON BAR
 RPF DENOTES ROCK POST
 M DENOTES MONUMENT FOUND
 MFD DENOTES MONUMENT FOUND
 (P1) DENOTES PLAN 3367(6.0.), MTO FILE P-2128-62
 (P2) DENOTES PLAN 41765(6.0.), MTO FILE P-2157-21
 (P3) DENOTES PLAN 358-19532
 (P4) DENOTES PLAN 358-3213
 (P5) DENOTES PLAN 3072(6.0.), MTO FILE P-2125-55
 (P6) DENOTES PLAN 358-19206
 (P7) DENOTES PLAN 358-18503
 (P8) DENOTES PLAN 358-10794
 (P9) DENOTES PLAN 37201, MTO FILE P-2157-11
 (P10) DENOTES PLAN ATTACHED TO INSTRUMENT #46733
 DENOTES UTILITY POLE

I REQUIRE THIS PLAN TO BE DEPOSITED UNDER THE LAND TITLES ACT.		PLAN 35R -		
DATE: -----		RECEIVED AND DEPOSITED		
DATE: -----		DATE: -----		
KEVIN P. KUJALA ON-ROAD LAND SURVEYOR		LAND REGISTRAR FOR THE LAND TITLES DIVISION OF MUSKOKA		
SCHEDULE OF PARTS				
PART	LOT	PLAN/CONCESSION	P.I.N.	AREA
1			48029-0630(LT)	0.0794
2				0.0164
3		PART OF LOT 33, CONCESSION 7	48029-0633(LT)	0.0154
4		GEOGRAPHIC TOWNSHIP OF WOOD		0.0184
5			48029-0630(LT)	0.1494
6		PART OF LOT 260, REG'D PLAN 26 AND PART OF BLOCK M, REG'D PLAN 20 GEOGRAPHIC TOWNSHIP OF MEDORA	48154-0623(LT)	0.1644

AREAS SHOWN HEREON ARE CALCULATED FROM GROUND DISTANCES



POINT	NORTHING	EASTING	FEATURE
5	488548.758	609161.733	SIB
6	488532.849	609209.468	SIB
7	488532.849	609201.169	SIB
8	488527.9247	609241.574	CORNER
9	488540.211	609189.152	P.W.E.
10	488540.211	609189.152	P.W.E.
11	488540.211	609189.152	P.W.E.
12	488540.211	609189.152	P.W.E.
13	488540.211	609189.152	P.W.E.
14	488540.211	609189.152	P.W.E.
15	488540.211	609189.152	P.W.E.
16	488540.211	609189.152	P.W.E.
17	488540.211	609189.152	P.W.E.
18	488540.211	609189.152	P.W.E.
19	488540.211	609189.152	P.W.E.
20	488540.211	609189.152	P.W.E.
21	488540.211	609189.152	P.W.E.
22	488540.211	609189.152	P.W.E.
23	488540.211	609189.152	P.W.E.
24	488540.211	609189.152	P.W.E.
25	488540.211	609189.152	P.W.E.
26	488540.211	609189.152	P.W.E.
27	488540.211	609189.152	P.W.E.
28	488540.211	609189.152	P.W.E.
29	488540.211	609189.152	P.W.E.
30	488540.211	609189.152	P.W.E.
31	488540.211	609189.152	P.W.E.
32	488540.211	609189.152	P.W.E.
33	488540.211	609189.152	P.W.E.
34	488540.211	609189.152	P.W.E.
35	488540.211	609189.152	P.W.E.
36	488540.211	609189.152	P.W.E.
37	488540.211	609189.152	P.W.E.
38	488540.211	609189.152	P.W.E.
39	488540.211	609189.152	P.W.E.
40	488540.211	609189.152	P.W.E.
41	488540.211	609189.152	P.W.E.
42	488540.211	609189.152	P.W.E.
43	488540.211	609189.152	P.W.E.
44	488540.211	609189.152	P.W.E.
45	488540.211	609189.152	P.W.E.
46	488540.211	609189.152	P.W.E.
47	488540.211	609189.152	P.W.E.
48	488540.211	609189.152	P.W.E.
49	488540.211	609189.152	P.W.E.
50	488540.211	609189.152	P.W.E.
51	488540.211	609189.152	P.W.E.
52	488540.211	609189.152	P.W.E.
53	488540.211	609189.152	P.W.E.
54	488540.211	609189.152	P.W.E.
55	488540.211	609189.152	P.W.E.
56	488540.211	609189.152	P.W.E.
57	488540.211	609189.152	P.W.E.
58	488540.211	609189.152	P.W.E.
59	488540.211	609189.152	P.W.E.
60	488540.211	609189.152	P.W.E.
61	488540.211	609189.152	P.W.E.
62	488540.211	609189.152	P.W.E.
63	488540.211	609189.152	P.W.E.
64	488540.211	609189.152	P.W.E.
65	488540.211	609189.152	P.W.E.
66	488540.211	609189.152	P.W.E.
67	488540.211	609189.152	P.W.E.
68	488540.211	609189.152	P.W.E.
69	488540.211	609189.152	P.W.E.
70	488540.211	609189.152	P.W.E.
71	488540.211	609189.152	P.W.E.
72	488540.211	609189.152	P.W.E.
73	488540.211	609189.152	P.W.E.
74	488540.211	609189.152	P.W.E.
75	488540.211	609189.152	P.W.E.
76	488540.211	609189.152	P.W.E.
77	488540.211	609189.152	P.W.E.
78	488540.211	609189.152	P.W.E.
79	488540.211	609189.152	P.W.E.
80	488540.211	609189.152	P.W.E.
81	488540.211	609189.152	P.W.E.
82	488540.211	609189.152	P.W.E.
83	488540.211	609189.152	P.W.E.
84	488540.211	609189.152	P.W.E.
85	488540.211	609189.152	P.W.E.
86	488540.211	609189.152	P.W.E.
87	488540.211	609189.152	P.W.E.
88	488540.211	609189.152	P.W.E.
89	488540.211	609189.152	P.W.E.
90	488540.211	609189.152	P.W.E.
91	488540.211	609189.152	P.W.E.
92	488540.211	609189.152	P.W.E.
93	488540.211	609189.152	P.W.E.
94	488540.211	609189.152	P.W.E.
95	488540.211	609189.152	P.W.E.
96	488540.211	609189.152	P.W.E.
97	488540.211	609189.152	P.W.E.
98	488540.211	609189.152	P.W.E.
99	488540.211	609189.152	P.W.E.
100	488540.211	609189.152	P.W.E.

SURVEYOR'S CERTIFICATE
 I CERTIFY THAT:
 1. THIS SURVEY AND PLAN ARE CORRECT AND IN ACCORDANCE WITH THE SURVEYORS ACT, THE SURVEYORS REGULATION, THE LAND TITLES ACT AND THE REGULATIONS MADE UNDER THEM.
 2. THE SURVEY WAS COMPLETED ON THE 30th DAY OF APRIL, 2008.

BEARINGS SHOWN HEREON ARE GRID BEARINGS AND ARE REFERRED TO THE RESULTANT CALCULATION BETWEEN MTD CONTROL POINTS 81990327 & 81990328 AND HAVING A BEARING OF N139°21'E.

METRIC DISTANCES SHOWN ON THIS PLAN ARE IN METRES AND CAN BE CONVERTED TO FEET BY DIVIDING BY 0.3048.

EJ WILLIAMS SURVEYING LIMITED
 ONTARIO LAND SURVEYORS
 PLANNERS
 BURK'S FALLS HUNTSVILLE SOUTH RIVER
 Main Office: 6-133 Highway #60 P1H 1C2
 Huntsville, Ontario
 Phone: 705-789-4171
 Fax: 705-789-1097
 Email: info@ejwilliamssurveying.com